

6

5

4

3

2

1

D

D

C

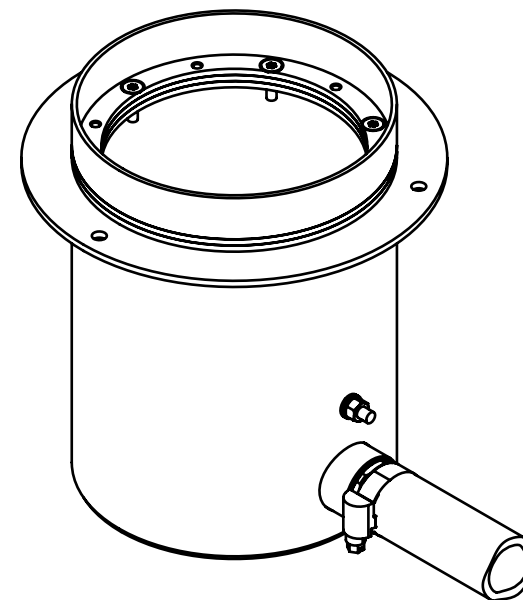
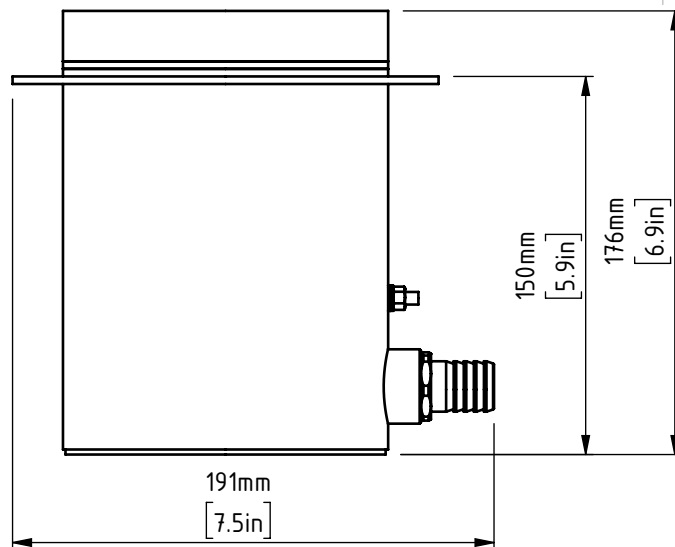
C

B

B

A

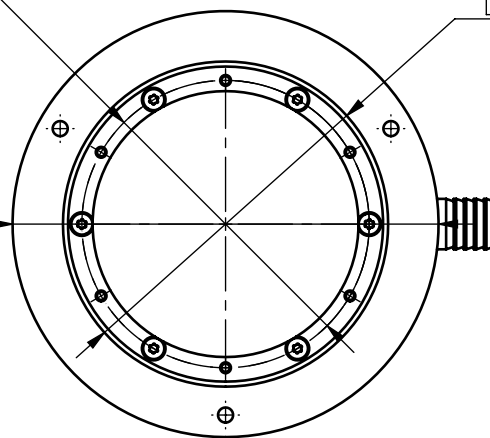
A



Ø 114mm P.C.D.
[4.5in]

Ø 129mm
[5.1in]

Ø 169mm
[6.7in]



DESCRIPTION:	MATERIAL	MASS: 1929.3 [g]	SURFACE FINISH:
DOCUMENT TYPE: ASSY. DWG.	INTENDED FOR: SALES DEPARTMENT	DRAWING STATUS: APPROVED	
 FIRST ANGLE PROJECTION	U.N.O. TOLERANCES 2 PLACE DECIMAL 0.00 ±0.1 1 PLACE DECIMAL 0.0 ±0.25 0 PLACE DECIMAL 0 ±0.5 ANGULAR 15 MIN. (0.25°) BREAK SHARP EDGES 0.3 ± 0.1 x 45°	DESIGNED	Marko Topalović mag.ing.
		CHECKED	Mauro Brljafa univ.bacc.
		APPROVED	Marko Topalović mag.ing.
SCALE 1:3	U.N.O. DIMENSIONS IN MILLIMETERS	SHEET SIZE A4	SHEET 2/18
		DATE OF ISSUE 20/11/2021	REV. 0

E		
D		
C		
B		
A		
REV.	ALTERATIONS	DESIGNED
REVISION		

FILIX

THIS DOCUMENT IS PROPERTY OF FILIX D.O.O. WITH ALL PERTAINING RIGHTS AND IT IS NOT TO BE COPIED OR USED FOR ANY OTHER PURPOSES OTHER THAN INTENDED ONE WITHOUT PREVIOUS WRITTEN PERMISSION OF FILIX D.O.O. WHO RESERVES ALL RIGHTS AND INTERESTS THEREO.

PROJECT:

TITLE:

SAP CODE:

**

DRAWING NUMBER:

AXM-H01-000

AXM - INST. HOUSING - CONCRETE - INT. - BACKFEED

6

5

4

3

2

1